



Main Product(barrel)

1. Diameter:

Min $\Phi 15\text{mm}$, Max $\Phi 300 \times 8000\text{mm}$

2.Raw materials:

38CrMoALA (SACM645) 1.8550

Bimetal

3.Surface Roughness: $Ra0.4\mu\text{m}$

4.Linearity: $0.015\text{mm} / \text{n}$

5 Nitrided hardness: 950Hv

Nitrided Depth: $0.5 \sim 0.7\text{mm}$

Nitrided brittleness: 2



Single Barrel

>Our products



Extruder barrel specifications:

Diameter: $\phi 15$ - $\phi 300$

Length-diameter ratio: $L/D=15-46$

Injection molding machine melt glue tubing (barrel) specifications:

Mould clamp force: 250t-3200t

Injection amount: 30g-2500g

Technology index:

Nitriding layer: 0.5-0.8mm

Nitriding hardness: $> 950\text{HV}$

Nitriding brittleness: $< \text{level } 2$

Linearity: 0.015mm/m

Surface roughness: $Ra0.4/\text{m}$

Twin Barrel

>Our products



Counter-rotating dual-hole barrel specifications:

Diameter: $\phi 45$ - $\phi 200$ (according to the demands of customers)

Length-diameter ratio: $L/D=16-35$

Conical dual-hole barrel

specifications: $\phi 25$ / $\phi 45$ - $\phi 92$ / $\phi 188$
(according to the demands of customers)

The screw compressor can be designed according to different products and formulas

Technology index:

Nitriding layer depth: 0.5-0.8mm

Nitriding layer hardness: > 950HV

Nitriding brittleness: < level 2

Bimetallic Barrel

>Our products



Product specification: barrel diameter: $\phi 15$ - $\phi 250$
upper limit of the length 4000mm

Technology index: Surface roughness: Ra0.4mm
Barrel linearity: 0.015mm/m



Rubber Barrels

>Our products



Product specification: $\phi 60\text{mm} \times 12\text{D}$ - $\phi 300\text{mm} \times 18\text{D}$

Technology index: Surface roughness: $Ra0.4/\text{mm}$

Barrel linearity: 0.015mm/m

2

Screw

Main Product(Screw)

1. Diameter:
Min Φ 14mm, Max Φ 300 \times 8000mm
2. Product Type: Nitriding, Bimetal
3. Raw Materials:
38CrMoALA, 9Cr8MoV H13 SKD61
4. Surface Roughness: Ra0.4 μ m
5. Linearity: 0.015mm / n
6. Surface treatment:
Nitriding Treatment, Surface spray, weld
bimetal, through harden.



Single Screw

>Our products



Extruder screw specifications:

Diameter: $\phi 15$ - $\phi 300$

Length-diameter ratio: L/D=15-46

Injection molding machine melt glue tubing screw specifications:

Mould clamp force: 250t-3200t

Injection amount: 30g-2500g

Technology index:

Nitriding layer: 0.5-0.8mm

Nitriding hardness: > 950HV

Nitriding brittleness: < level 2

Linearity: 0.015mm/m

Surface roughness: Ra0.4/m

Product classification:

Aiming at different plastic products the screw can be chosen: general type, pin type, barrier type, separation type, and gas-exhausting type, etc.

Twin Screw

>Our products



Counter-rotating dual-hole screw specifications:

Diameter: $\phi 45$ - $\phi 200$ (according to the demands of customers)

Length-diameter ratio: $L/D=16-35$

Conical dual-hole screw specifications: $\phi 25$ / $\phi 45$ - $\phi 92$ / $\phi 188$ (according to the demands of customers)

The screw compressor can be designed according to different products and formulas

Technology index:

Nitriding layer depth: 0.5-0.8mm

Nitriding layer hardness: $> 950\text{HV}$

Nitriding brittleness: $< \text{level } 2$

Bimetallic Screws

>Our products

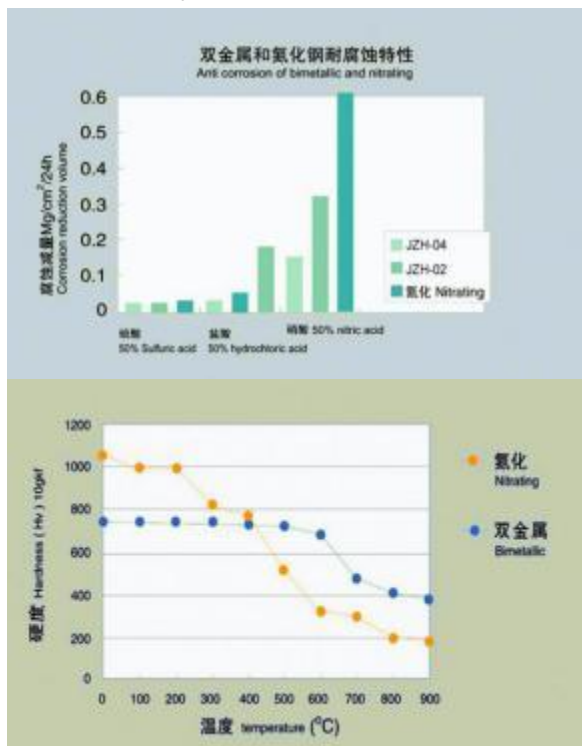


Product specification: barrel diameter:
 $\phi 15$ - $\phi 350$

upper limit of the length 8000mm

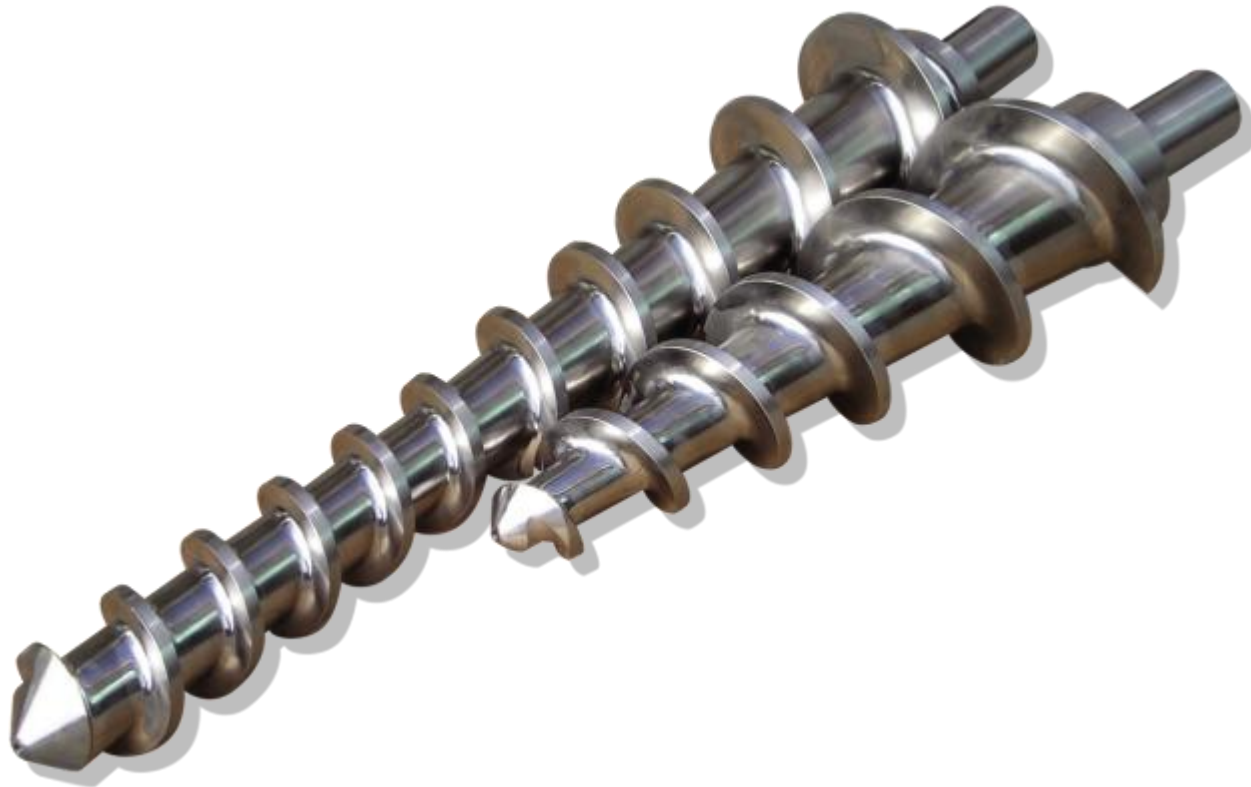
Technology index: Surface roughness:
Ra0.4mm

Barrel linearity: 0.015mm/m



Rubber Screws

>Our products



Product specification: $\phi 60\text{mm} \times 12\text{D}$ - $\phi 300\text{mm} \times 18\text{D}$
Technology index: Surface roughness: $Ra0.4/\text{mm}$
Barrel linearity: 0.015mm/m

Tips

>Our products



Injection molding machine fittings: non-return valve, electric ring, screw head, nozzle,
precursor Extruder fittings: flange, water sleeve

3

Main Product(Screw Element)

Screw element



Screw Element

>Our products



Diameter: $\phi 18-\phi 400$

Raw Materials: 9Cr18MoV W6Mo5Cr4V2
38CrMoALA

Surface Treatment: Surface spray, Quenching Treatment

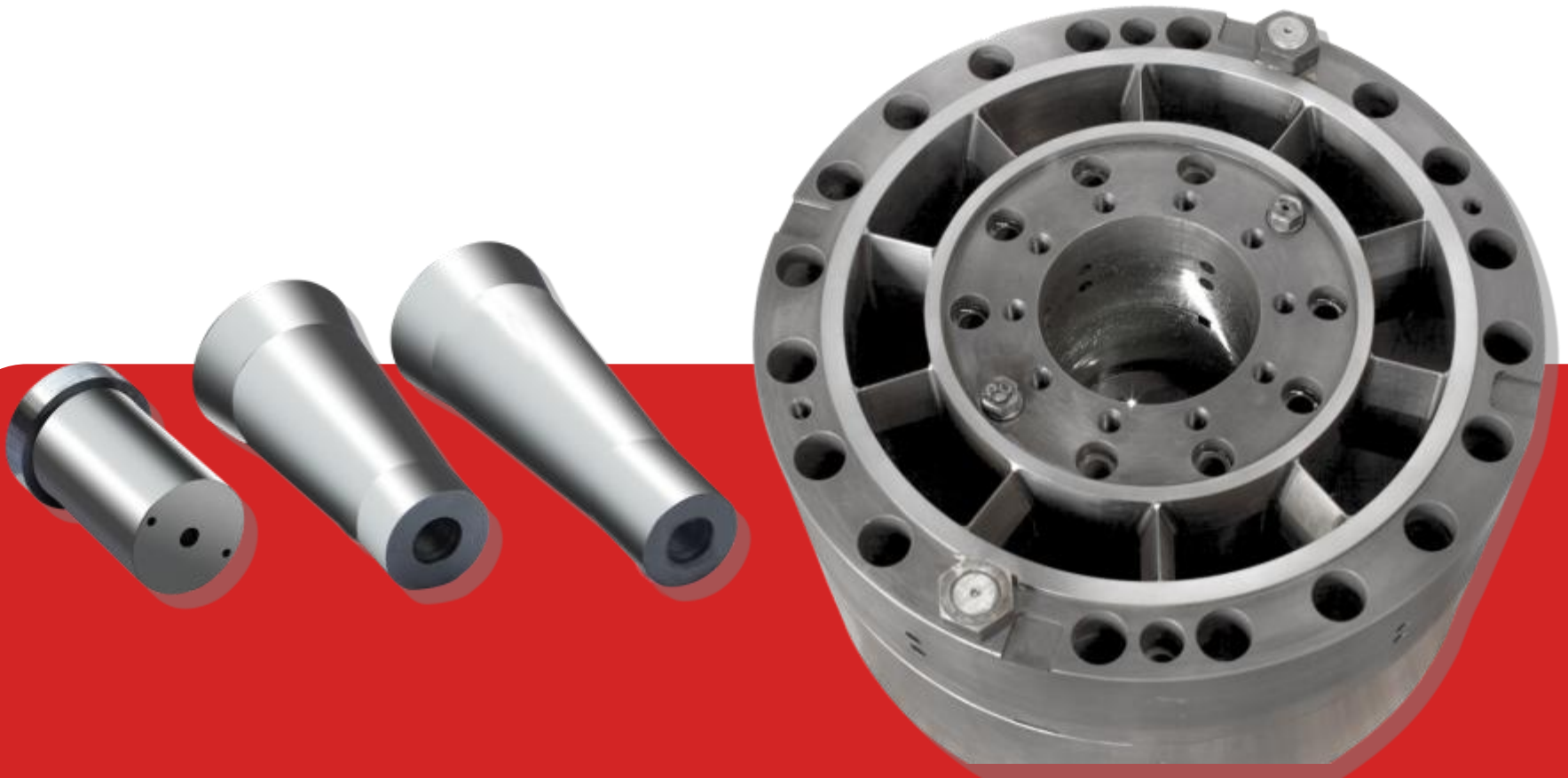
Surface Roughness: Ra0.4 μ m

Surface hardness : 900-1050Hv 58-64HRC

4

Dies

Main Product(Dies)



Dies

> Our products



Diameter: $\phi 20\text{mm}$ - $\phi 800\text{mm}$

Raw Materials: 42CrMo 38CrMoALA

Surface treatment:

Nitriding Treatment Chrome-plated

Surface roughness flow : $Ra0.4 \mu\text{m}$

We are based on customer requirements,
customized tube Dies

Dies

>Our products



Diameter: $\phi 20\text{mm}$ - $\phi 800\text{mm}$

Raw Materials: 42CrMo 38CrMoALA

Surface treatment:

Nitriding Treatment Chrome-plated

Road surface roughness flow : $Ra0.4\ \mu\text{m}$

We are based on customer requirements,
customized tube Dies

Dies

>Our products



Diameter: $\phi 20\text{mm}$ - $\phi 800\text{mm}$

Raw Materials: 42CrMo 38CrMoALA

Surface treatment:

Nitriding Treatment Chrome-plated

Road surface roughness flow : $Ra0.4\ \mu\text{m}$

We are based on customer requirements,
customized tube Dies

Dies

>Our products



Diameter: $\phi 20\text{mm}$ - $\phi 800\text{mm}$

Raw Materials: 42CrMo 38CrMoALA

Surface treatment:

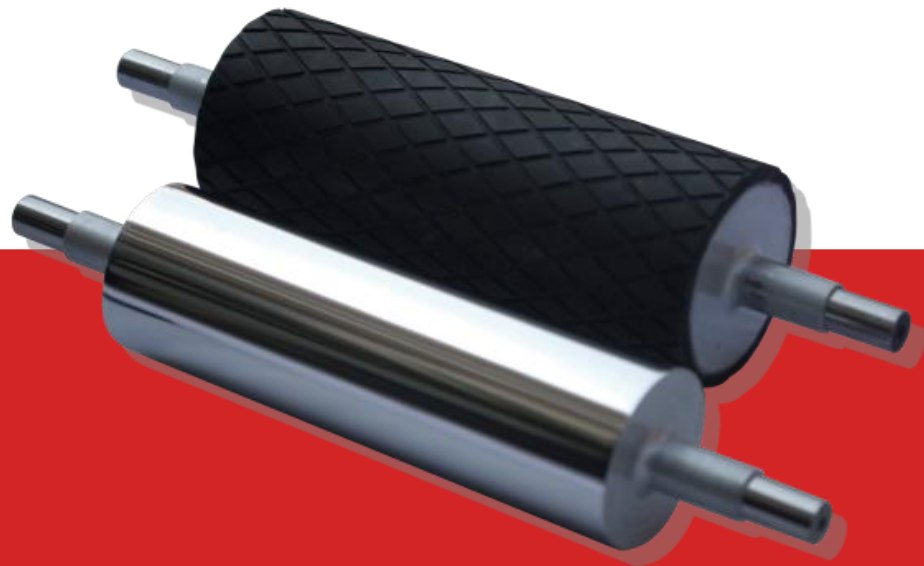
Nitriding Treatment Chrome-plated

Road surface roughness flow : $Ra0.4 \mu\text{m}$

We are based on customer requirements,
customized tube Dies

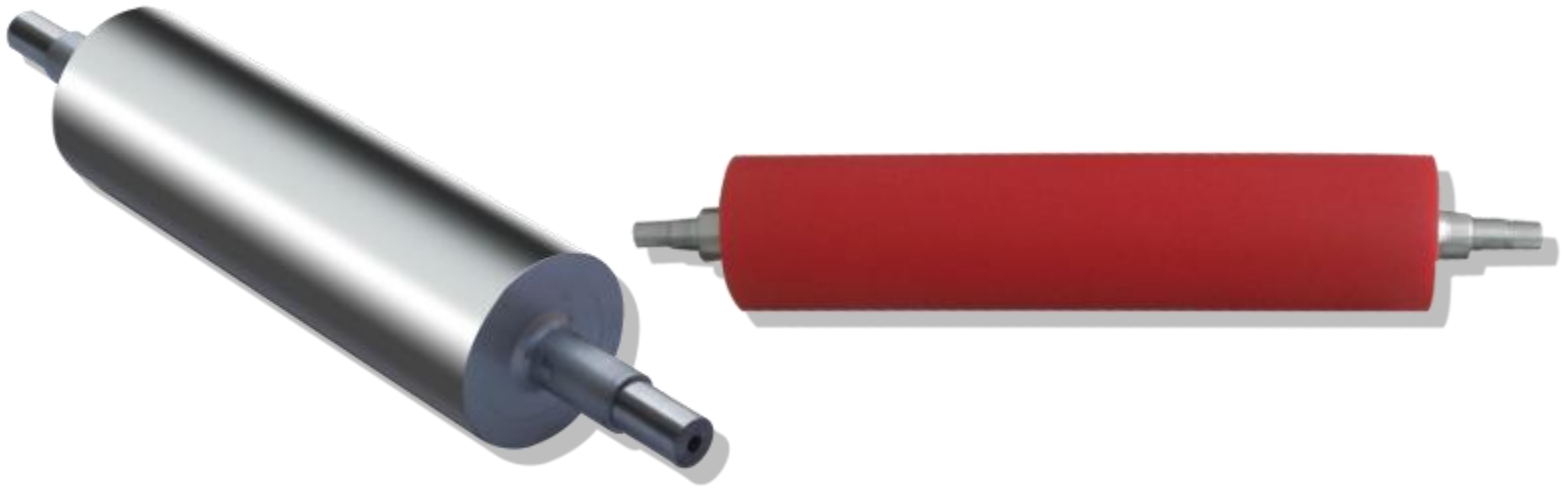
Main Product(Rollers)

Rollers



Rollers

>Our products



Diameter: Min $\phi 50\text{mm}$ Max $1600\text{mm} \times 8000\text{mm}$

Product Type: Rubber Rollers Aluminum alloy Rollers
Mirror Rollers(chrome) expansible shaft

Raw Material: 20# 45# Aluminum alloy Silastic
NBR rubber glue,etc

Surface Roughness: $Ra0.0125 \mu\text{m}$ (mirror Rollers)

Hardware devices :

The company has a complete range of machining equipment, has a bi-metal melting furnace, nitriding furnace, CNC machining centers, CNC boring machine, CNC screw milling, heat treatment equipment, alloy spray equipment and high frequency quenching equipment.

Software device :

1. R & D department use state-of-the-art computer-axis-aided design and production software

Such as: Solidworks Pro-Engineer AutoCAD product design and production

2. Quality management: every process with a professional quality inspector for testing, from cutting, roughing, rough cleaning, has been grinding to fine cars, to secure flawless. And the use of state-of-the-art instruments, meters, finished the main technical parameters strictly, to the most refined finest.



> Our equipment



Has three seven meters nitriding furnace,
nitriding hardness 1000HV.

**Nitride
workshop**

> Our equipment



Has two quenching and tempering furnace, quenching hardness 280HV.

**Nitride
workshop**



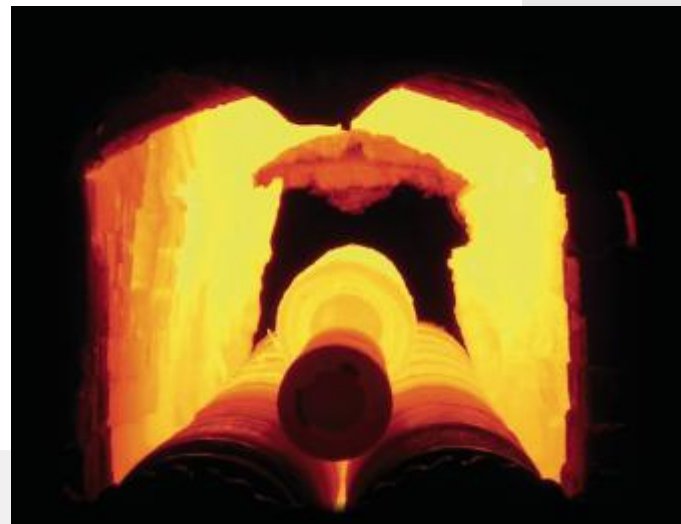
Screw spray



Alloy repair



Bi-metal melting furnace



Bi-metal melting furnace

**Alloy
plant**

> Our equipment



**CNC
Machining
center**

> Our equipment



**CNC
screw
milling
machine**

Our equipment



数控
镗床

> Our equipment



**CNC
lathes**

> Our equipment



Supermarket Warehouse Management

**Raw
materials
warehouse**

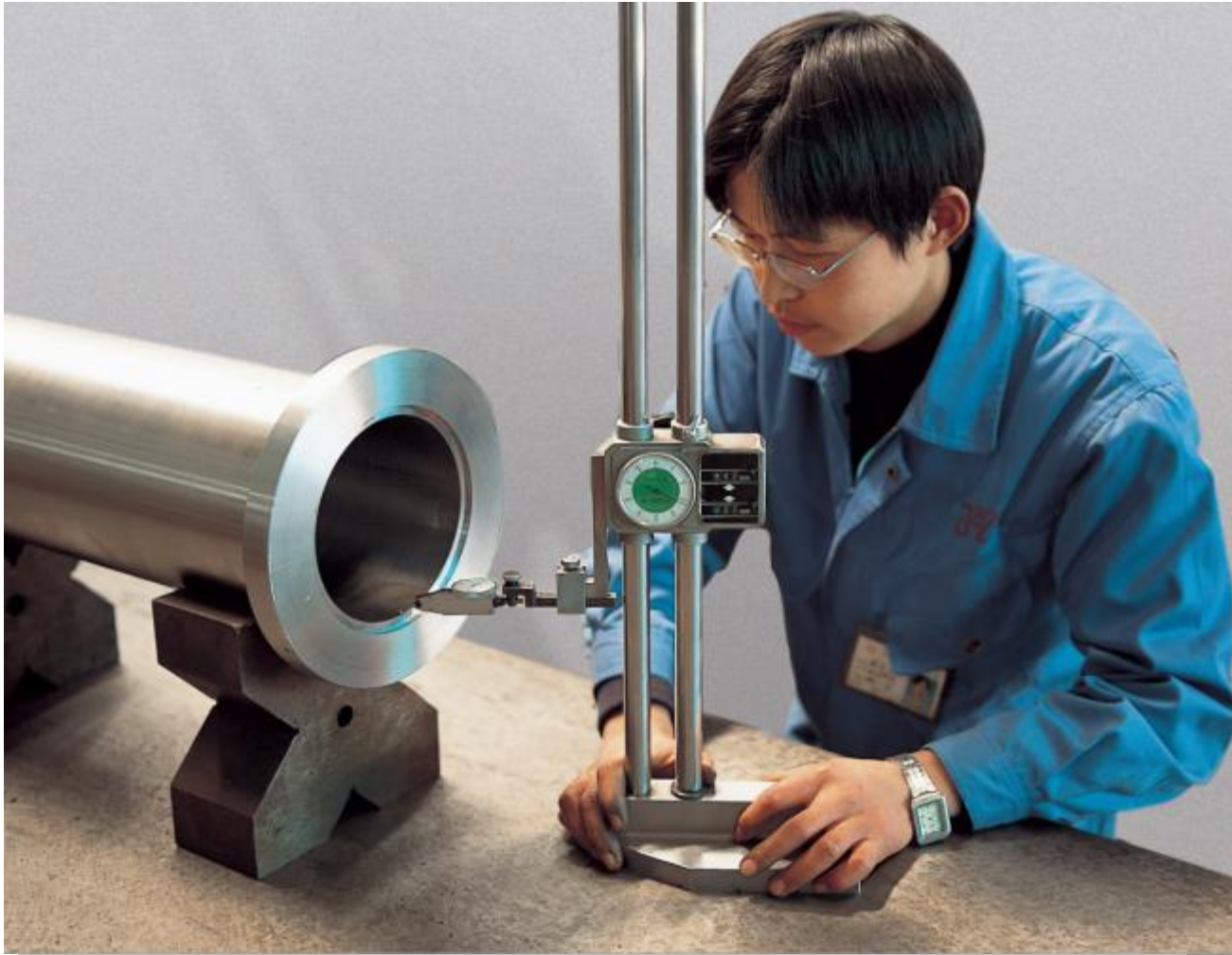
> Our equipment



Rigorous quality inspection

**Quality
control**

> Our equipment



Rigorous quality inspection

**Quality
control**

> Our equipment



Rigorous quality inspection

**Quality
control**

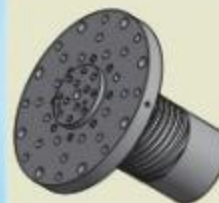


TECHNOLOGY

技术与研发

针对客户的需求，提供来样来图加工，测量改进修复等技术支持与服务。技术研发部门采用先进的电脑辅助设计及生产软件，提高产品的设计质量，创造更高品质的产品。

Advanced computerized designing and software are adopted by technical research department, such as Solid works, Pro-Engineer AutoCAD etc. It keeps optimizing product designs and shortening the development period to ensure best quality.



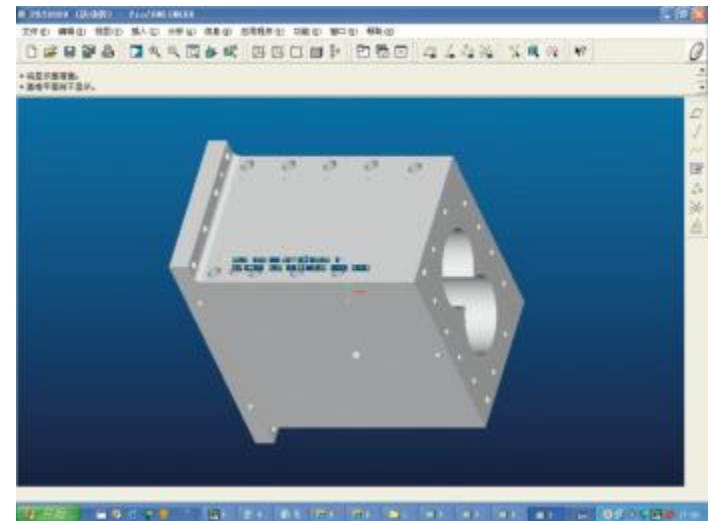
>Design

Advanced computerized designing and software are adopted by technical research department, such as Solidworkd, Pro-Engubeer AutoCAD etc. It keeps optimizing product desings and shortening the development period to ensure best quality.

>Refit

Depending on the decade years' producing experience in plastic mechanical area, our company can custom modify kinds of screw and barrel for customers, and reload machine, making customers use suitable screw and barrel aiming at their own products. So as to optimize the producing efficiency of customers, to gain bigger profit space for them.

Advanced
Technol



>Survey & Map

Our company can do precise surveying and mapping according to the detailed samples sent by customers, using the most scientific and most effective ways, to arrive the demands of customers.

>Repair

Remediation:

1. Our company can do repair work to some screws with relatively big diameter according to the demands of clients. We adopt high-quality alloys to spray-weld the screw, which can prolong its lifespan to 50%-60%
2. Adopting alloy bush to match the barrel, which can prolong its lifespan to 50%-70%

